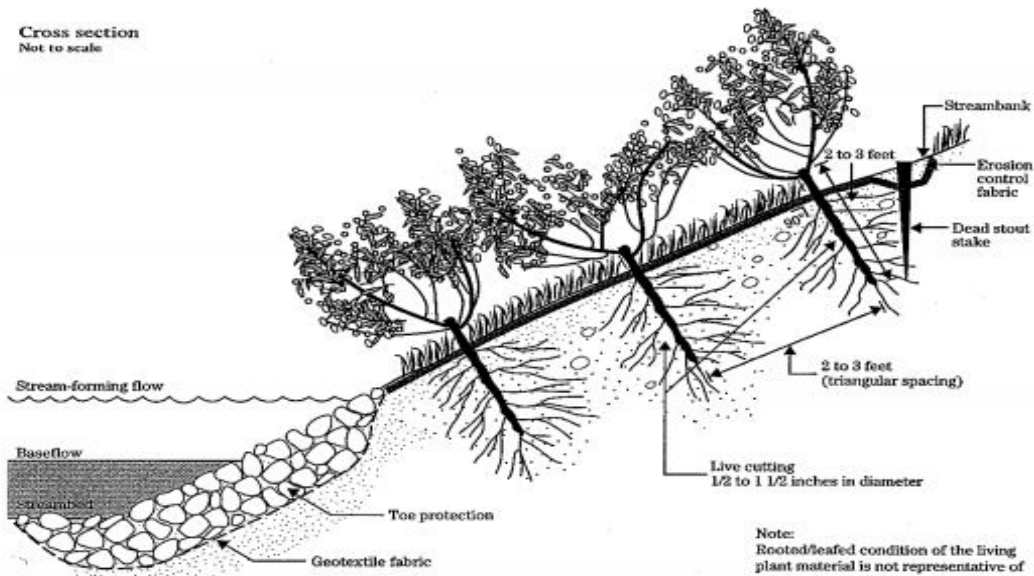
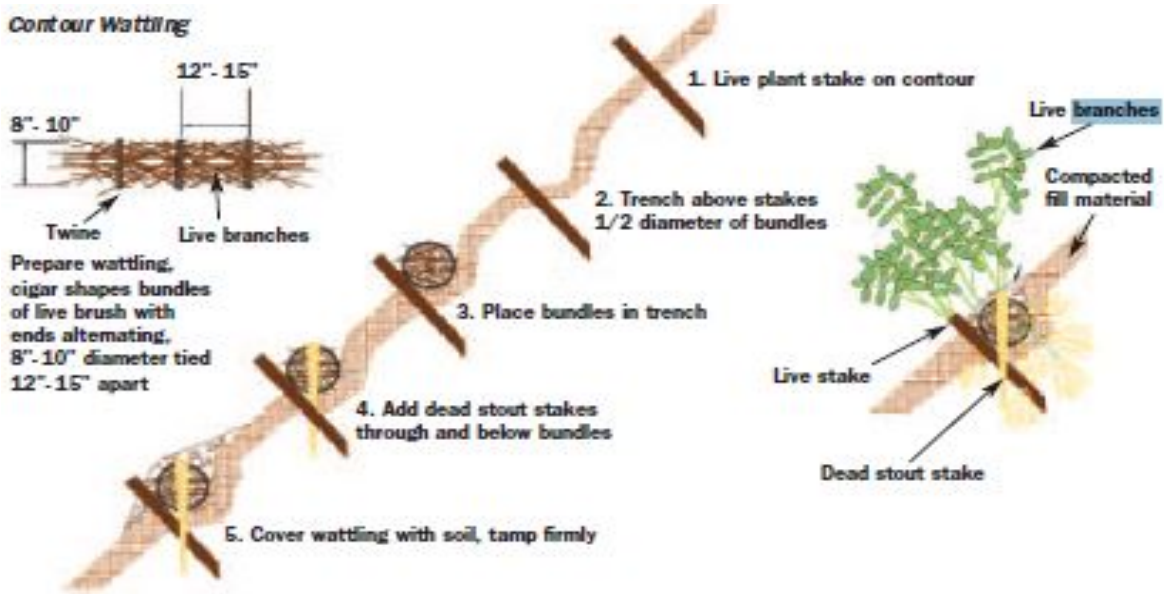


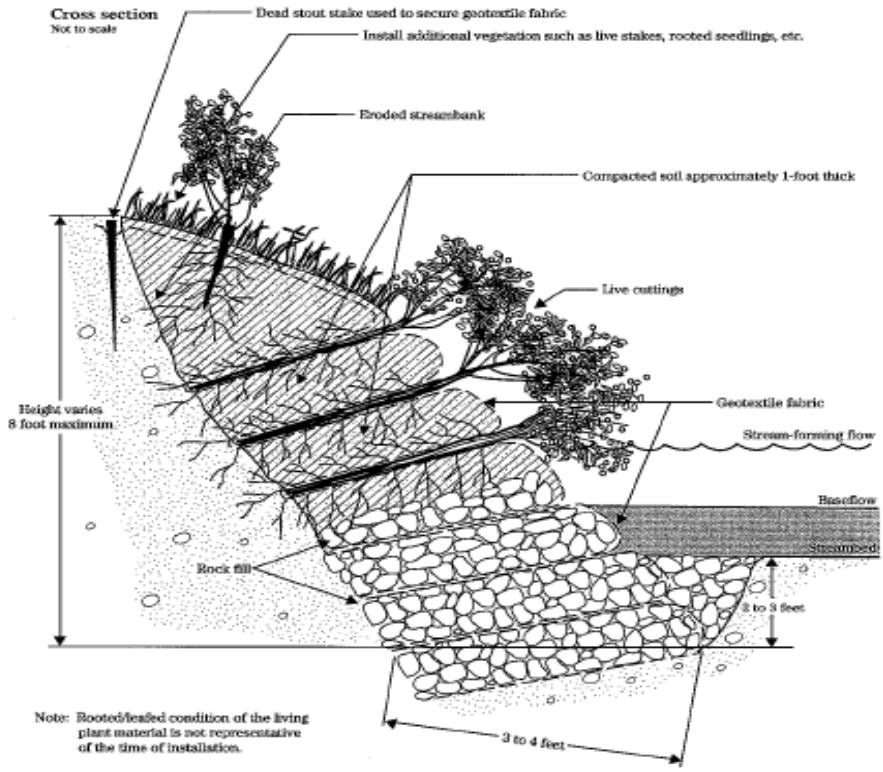
Cross section
Not to scale



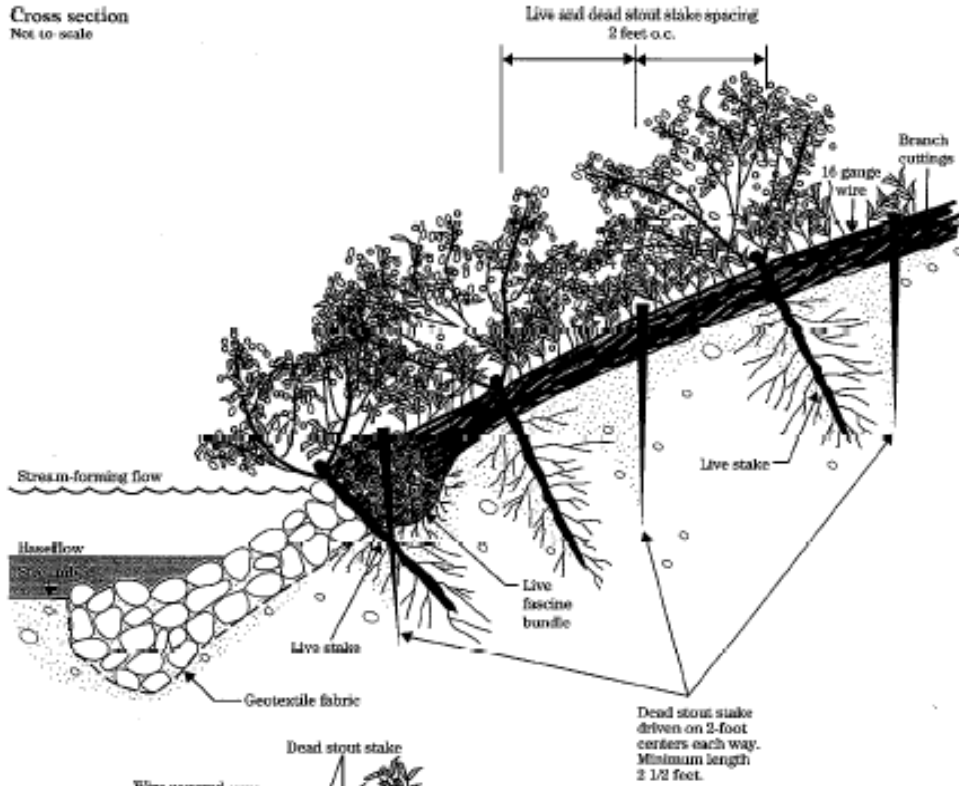
Note:
Rooted/leafed condition of the living plant material is not representative of the time of installation.

Contour Wattling

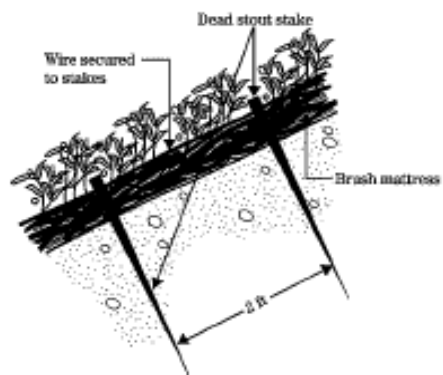




Cross section
Not to scale

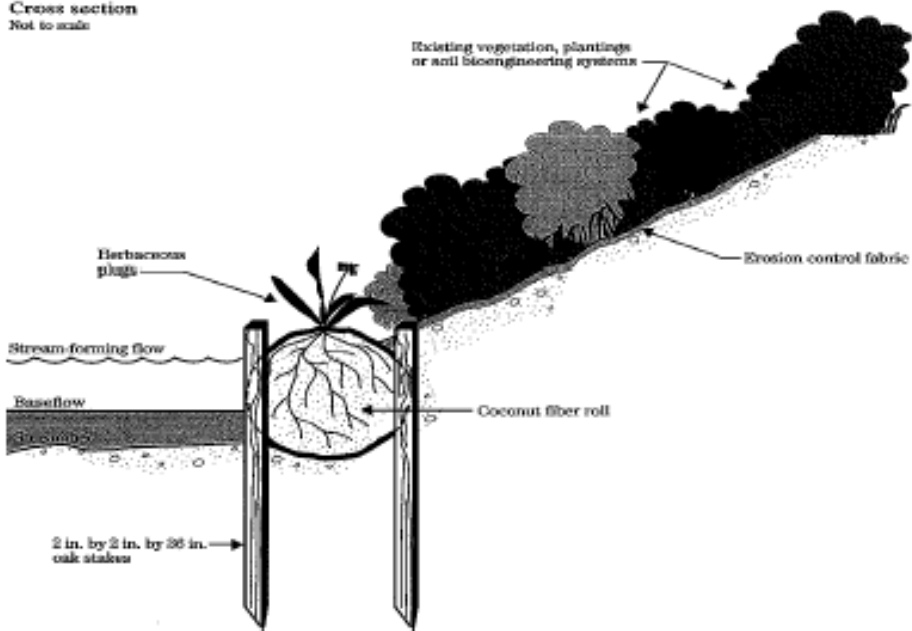


Dead stout stake driven on 2-foot centers each way. Minimum length 2 1/2 feet.

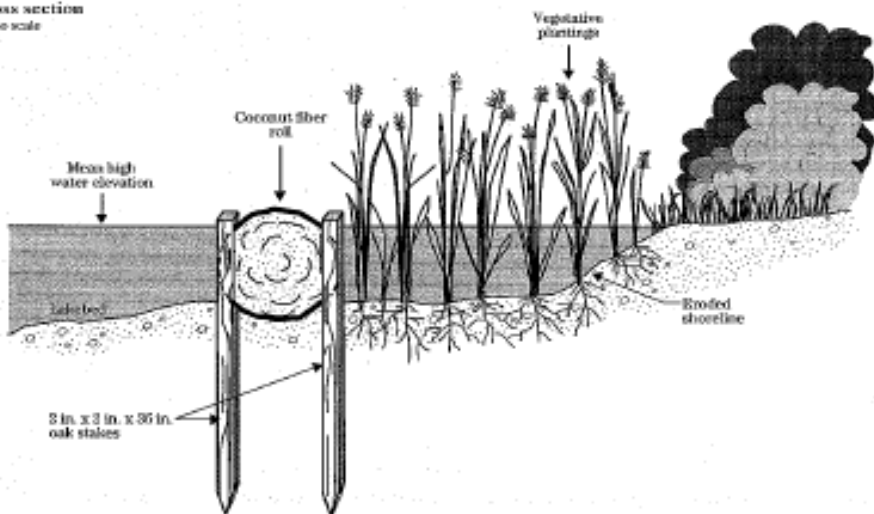


Note:
Rooted/leafed condition of the living plant material is not representative at the time of installation.

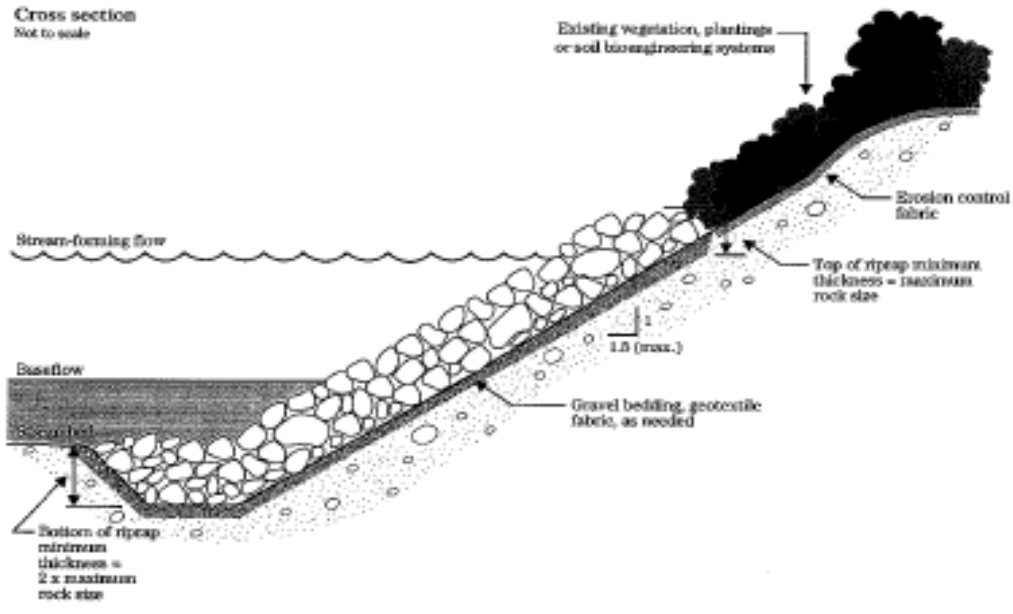
Cross section
Not to scale



Cross section
Not to scale



Cross section
Not to scale



Cross section
Not to scale

